

# The Joy of The Beatles

A selection of twenty classic Beatles songs  
arranged for piano, complete with lyrics. Includes 'A Hard Day's Night',  
'Eleanor Rigby', 'Penny Lane' and 'Yellow Submarine'.  
Arranged by Barry Todd.



# A Hard Day's Night

Words & Music by John Lennon & Paul McCartney

Moderate rock



Handwritten circled number 4 in the top left corner.

Chords: G, C(add<sup>9</sup>), G, F

It's been a hard day's night — And I've been work - ing like a

Chords: G, C(add<sup>9</sup>), G, F

dog. — It's been a hard day's night — I should be sleep - ing like a log.

Chords: G, C, D

But when I get home to you — I find the things that you do — Will make me

Chords: G, C, To Coda, G, C(add<sup>9</sup>), G

feel — al - right. — You know I work all day — To get you

F G C(add9) G

mon-ey to buy you things. And it's worth it just to hear you say You're gon-na

F G C D

give me ev-'ry-thing. So why I love to come home 'cos when I get you a-lone you know I'll

G C G Bm Em

feel o - kay. When I'm home ev-'ry-thing seems to be al-

Bm G Em

right. When I'm home feel-ing you hold-ing me

C D G C(add9) G

tight, tight, yeah, It's been a hard day's night and I've been

F G C(add<sup>9</sup>) G

work - ing like a dog. It's been a hard day's night I should be

F G C

sleep - ing like a log. But when I get home to you I find the

D G C G C

things that you do will make me feel al - right.

G F G C

So why I love to come home 'cos when I

G F G C

So why I love to come home 'cos when I

D G C G

get you a - lone you know I feel o - kay. When I'm home

Bm Em Bm

ev - ry - thing seems to be al - right. When I'm home

G Em C D *D. % al Coda*

feel - ing you hold - ing me tight, tight, yeah, It's been a

*Coda* ⊕

G C G C

You know I feel al - right. You know I feel al - right.

F *Repeat and Fade*

# Can't Buy Me Love

Words & Music by John Lennon & Paul McCartney

Bright shuffle ♩ = ♩ ♩

Em

Am

Can't buy me love, oh, love,

Em

Am

Dm7

G7

oh, Can't buy me love, oh, I. I'll

§ C

buy you a dia - mond ring, my friend, if it makes you feel al - right,  
(2.) give you all I've got to give if you say you love me too,  
4. Instrumental Solo

F7

I'll get you an - y - thing, my friend, if it  
I may not have a lot to give but what I've



C G F7

makes you feel al - right.  
got I'll give to you. } 'Cause I don't care too much for mon - ey, for

1. C 2,3. C Em

mon - ey can't buy me love.. 2. I'll Can't buy me love,

Am C Em

oh, ev - 'ry - bo - dy tells me so, Can't buy me love,

Am Dm7 G7 C

oh. No no no no! 3. Say you don't need no dia -

F7

-mond rings and I'll be sat - is - fied, Tell me that you want the kind

C G

— of things, — that mon - ey just can't buy. — I don't care too

F7 To Coda ⊕ C D.S. al ⊕ Coda

much for mon - ey, mon - ey can't buy me love.

Coda ⊕ C Em

mon - ey can't buy me love. Can't buy me love,

Am Em Am

love, Can't buy me love.

Dm7 G7 C





# Eight Days A Week

Words & Music by John Lennon & Paul McCartney

With a swing feel  $\text{♪} = \text{♩}$

Chords: D E G

1. Ooh I need your love, babe, — guess you know it's true.  
2&4. Love you ev - 'ry day, girl, — al - ways on my mind.  
3. Ooh I need your love, babe, — guess you know it's true.

Chords: D E G

— Hope you need my love, babe, — just like I need you..  
— One thing I can say, girl, — love you all the time..  
— Hope you need my love, babe, — just like I need you..

Chords: D Bm G Bm

— Hold me, — love me, — hold me, —

Chords: E D E G

love me, — I ain't got noth - in' but love, babe, — eight days a week.

4th time To Coda

1. D 2,3. D A

Three eighth notes (F#, A, C) beamed together, followed by a quarter rest.

Eight days a

Bm E

week, I love you. Eight days a

G 1. A 2. A D.C. al Coda

week is not e - nough to show I care. show I care.

Coda D G D

Eight days a week.

D E G D

# Eleanor Rigby

Words & Music by John Lennon & Paul McCartney

Moderately, with a steady beat

C Em

Ah ——— look at all — the lone - ly peo - ple! ———

C Em

Ah ——— look at all — the lone - ly peo - ple! ———

Em

1. El - ca - nor Rig - by, picks up the rice — in the church.  
 2. Fa - ther Mc - Ken - zie writ - ing the words — of a ser -  
 3. El - ca - nor Rig - by, died in the church — and was bur -

C Em

— where a wed - ding has been, — Lives in a dream. —  
 — mon that no — one will hear, — No one comes near. —  
 — ied a - long — with her name, — No - bod - y came. —

Waits at the win - dow, wear - ing the face — that she keeps — in a jar — by the door.  
 Look at him work - ing, darn - ing his socks — in the night — when there's no - bod - y there,  
 Fa - ther Mc - Ken - zie, wip - ing the dirt — from his hands — as he walks — from the grave,

C Em Em<sup>7</sup>

Who is it for? —  
 What does he care? — } All the lone - ly peo -  
 No one was saved. — }  
 o

Em<sup>6</sup> C Em

ple, Where do they all — come from? —

Em<sup>7</sup> Em<sup>6</sup> C

All the lone - ly peo - ple, Where do they all — be - long? —

1,2. Em 3. Em

# Here There And Everywhere

Words & Music by John Lennon & Paul McCartney

Ad lib.

G Bm B<sup>b</sup> Am D<sup>7</sup>

To lead a bet - ter life, I need my love to be here.

Moderately slow

G Am G C G Am

1. Here, mak - ing each day of the year,  
2. There, run - ning my hands through her hair,

G C F<sup>#</sup>m B F<sup>#</sup>m B

chang - ing my life with a wave of her hand.  
both of us think - ing how good it can be. No - bod - y can de - ny  
Some - one is speak - ing, but

Em Am 1. D<sup>7</sup> 2. F<sup>7</sup>

that there's some - thing there.  
she does - n't know he's there. I want her

B<sup>b</sup> Gm Cm D<sup>7</sup> Gm

ev - 'ry - where, and if she's be - side me I know I need nev - er care.

Cm D<sup>7</sup> G Am G C G Am

But to love her is to meet her ev - 'ry - where, Know - ing that love is to share;

G C F<sup>#</sup>m B F<sup>#</sup>m B

each one be - liev - ing that love nev - er dies, Watch - ing her eyes and hop -

Em Am 1. F<sup>7</sup> 2. D<sup>7</sup> G Am

ing I'm al - ways there. I want her I will be there and

G C G Am G C G

ev - 'ry - where, Here, there and ev - 'ry - where.

# I Want To Hold Your Hand

Words & Music by John Lennon & Paul McCartney

Moderately

G D Em Bm

Oh yeah, I'll tell you some-thing I think you'll un-der-stand. When  
please say to me you'll let me be your man, And

G D Em Bm C D7

I say that some-thing. I want to hold your hand, I want to hold your  
please say to me you'll let me hold your hand, Now let me hold your

G Em C D

1. G

2. G

hand, hand, I want to hold your hand. Oh, hand. I want to hold your

Dm7 G C Am Dm7

And when I touch you I feel hap-py in-side. It's such a



G C D C D C D

feel - ing that my love I can't hide, I can't hide, I can't hide!

G D Em

— Yeah, you got that some - thing, I think you'll un - der -  
Yeah, you got that some - thing, I think you'll un - der -

Bm G D Em Bm

-stand. When I say that some - thing, } I want to hold your hand,  
-stand. When I feel that some - thing, }

1. C D G Em C D G

I want to hold your hand, I want to hold your hand.

2. C D B C D C G

I want to hold your hand, I want to hold your hand.

Words & Music by John Lennon & Paul McCartney

Words & Music by John Lennon & Paul McCartney

### Moderate shuffle



A musical score for the song 'The Rose Tree'. The score is written for a single melodic line in 4/4 time. The key signature has one flat (B-flat). The melody consists of several measures, including a triplet of eighth notes in the third measure. The lyrics 'The Rose Tree' are written below the notes.

[illegible]

know I love you, I'll always be true, so please

(No chord) G7 C 1. G7 C

Love me do. Woh, Love me do.

2.

G7

G

D

C

me do,\_\_\_

Some - one to love,

Some - bo - dy

G

D

C

G

new,\_\_\_

Some - one to love,

Some - one like you.

G7

C

G7

C

G7

Love, love me do,\_\_\_

You know I love you,\_\_\_

I'll al - ways be true,\_\_\_

C

(No Chord)

G7

so please\_\_\_

Love me do,\_\_\_

1.

C

G7

G

2.

C

G7 Repeat and Fade

Woh,\_\_\_ Love\_\_\_ me do...

Woh,\_\_\_ Love\_\_\_ me do,\_\_\_

# Norwegian Wood

Words & Music by John Lennon & Paul McCartney

Slowly

F Cm F

I once had a girl, or should I say she once had me.

F Cm F

She showed me her room, is - n't it good, Nor - we - gian Wood. She

§ Fm B+

asked me to stay and she told me to sit an - y - where, So I  
told me she worked in the morn - ing and start - ed to laugh,

Fm Gm C7

I looked a - round and I no - ticed there was - n't a chair. bath.  
told her I did - n't and crawled off to sleep in the

F Cm F

I sat on a rug, bid - ing my time, drink - ing her wine.  
And when I a - woke, I was a - lone, this bird had flown.

F *To Coda* Cm F

We talked un - til two and then she said: "It's time for bed".  
So I lit a fire, Is - n't it

F Cm F

(No words)

F Cm F *D.S. al Coda*

She

*Coda*

*Rall.* Cm F

good, Nor - we - gian Wood.

# Penny Lane

Words & Music by John Lennon & Paul McCartney

Medium swing tempo ♩ = 112

C Am Dm G

Pen - ny Lane there is a bar - ber show - ing pho - to - graphs of ev - 'ry head.  
shel - ter in the mid - dle of the round - a - bout, the pret - ty nurse.

C Am Cm Am

he's had the pleas - ure to know, And all the peo - ple that come and go.  
is sel - ling pop - pies from a tray. And tho' she feels as if she's in a play.

A<sup>b</sup> G

stop and say hel - lo. On the  
she is an - y - way. Pen - ny

C Am Dm G C Am

cor - ner is a bank - er with a mot - or car, The lit - tle chil - dren laugh at him be - hind his  
Lane: the bar - ber shaves an - oth - er cust - om - er, We see the bank - er sit - ting wait - ing for a

Cm

Am

A<sup>b</sup>back.  
trim.And the  
And then thebank - er nev - er wears a mac  
fi - re - man rush - es in.in the pour -  
from the pour -

G

F

B<sup>b</sup>- ing rain,  
- ing rain,ve - ry strange!  
ve - ry strange!Pen - ny Lane  
Pen - ny Laneis in my ears  
is in my earsE<sup>b</sup>— and in my eyes,  
— and in my eyes.B<sup>b</sup>E<sup>b</sup>

To Coda ①

Wet be - neath the blue  
There be - neath the bluesub - ur - ban skies I sit. And  
sub - ur - ban skies I sit. And

G

C

Am

Dm

G

mean - while back in Pen - ny Lane

there is a fire - man with an

hour glass. And in his pock-



C Am Cm Am

- et is a por - trait of the Queen. He likes to keep his fire en - gine clean;

A<sup>b</sup> G

It's a clean ma - chine!

C Am Dm G C Am

Cm Am<sup>7-5</sup> A<sup>b</sup>

Cm G F B<sup>b</sup>

Pen - ny Lane is in my ears.

E<sup>b</sup> B<sup>b</sup>

and in my eyes, Full of fish.

E<sup>b</sup> G D.%, al Coda

and finger pies in sum - mer. Mean - while back be - hind the

Coda ⊕ G C

mean - while back Pen - ny Lane is in my ears and in my eyes.

F C F C

There, be - neath the blue

F C

sub - ur - ban skies Pen - ny Lane.

# Sgt. Pepper's Lonely Hearts Club Band

Words & Music by John Lennon & Paul McCartney

Slow 4

A<sup>7</sup>



C<sup>7</sup>

G

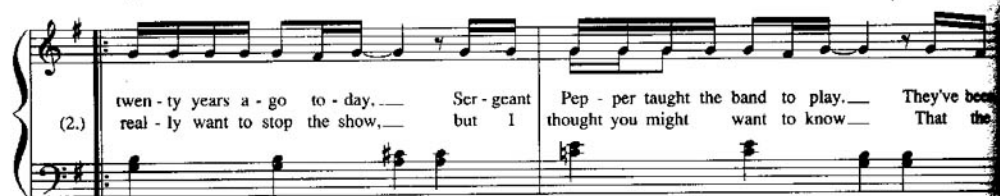


G

A<sup>7</sup>

C

G

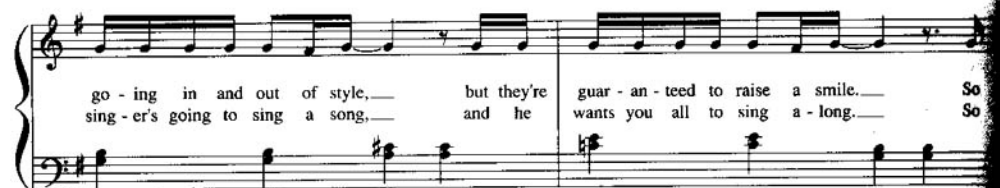


G

A<sup>7</sup>

C

G



A7

C

may I in - tro - duce to you the  
let me in - tro - duce to you the

act you've known for all these years:—  
one and on - ly Bil - ly Shears.—

G

C

G

C7

Ser - geant Pep - per's Lone - ly Hearts Club

Band. ———

F

C

D7

G

B $\flat$ 

We're  
We're

Ser - geant Pep - per's Lone - ly Hearts  
Ser - geant Pep - per's Lone - ly Hearts

C

G

C

G

— Club Band, — We  
— Club Band, — We

hope you will en - joy the show. —  
hope you have en - joyed the show. —

Ser-geant Pep-per's Lone-ly Hearts Club Band, Sit back and let the eve-ning go.  
 Ser-geant Pep-per's Lone-ly Hearts Club Band, We're sor-ry but it's time to go.

[illegible]

A C G C

I.

- geant Pep - per's Lone - ly Hearts Club Band. It's won - der - ful to be here, it's  
 - geant Pep - per's Lone - ly Hearts Club Band. It's

cer - tain - ly a thrill. You're such a love - ly aud - i - ence, we'd like to take you home with us, we'd

2. G B $\flat$  C G

love to take you home. 2. I don't Ser-geant Pep-per's Lone-ly Hearts Club Band, We'd

C G B $\flat$

like to thank you once a - gain.. Ser - geant Pep - per's one and on - ly

C G A D

Lone - ly Hearts Club Band, It's get - ting ve - ry near the end..

C G A

Ser - geant Pep - per's Lone - ly, Ser - geant Pep - per's Lone - ly, Ser - geant Pep - per's Lone - ly Hearts

C G

Club Band.

B $\flat$  C G

# She Loves You

Words & Music by John Lennon & Paul McCartney

## Moderate rock

Em A7

She loves you, yeah, yeah, yeah, — She loves you, yeah, yeah, yeah, — She

C G G

loves you, yeah, yeah, yeah, — 1. You think you've lost your love?

Em Bm D G Em

— Well, I saw her yes - ter day. — It's you she's think - ing of — And she

Bm D G Em

told me what to say: — She says she loves you and you know that can't be bad.



Cm D

Yes, she loves you and you know you should be glad. 2. She

G Em Bm D

(3.) said you hurt her so, She al - most lost her mind. But  
know it's up to you, I think it's on - ly fair.

G Em Bm D

now she says she knows You're not the hurt - ing kind. She says she  
Pride can hurt you too. A - pol - o - gize to her. Be - cause she

G Em

loves you and you know that can't be bad. Yes, she

Cm D Em

loves you, and you know you should be glad. Oo! She loves you, yeah.

A7 Cm

yeah, yeah, She loves you, yeah, yeah, yeah, And with a love like that you

D 1. G 2. G Em

know you should be glad. 3. You With a

Cm D G Em

love like that you know you should be glad. With a

Cm D G

love like that you know you should be glad. Yeah, yeah, yeah.

Em C G

Yeah, yeah, yeah. Yeah, yeah, yeah, yeah!

# Ticket To Ride

Words & Music by John Lennon & Paul McCartney

Moderately

No Chord



G

1. I think I'm gon - na be sad, I think it's to - day  
(2.) said that liv - ing with me is bring - ing her down.

Yeah! The girl that's driv - ing me mad  
Yeah! For she would nev - er be free.

Am

D7

is go - ing a - way.  
when I was a - round.

Em C7 Em

She's got a tick-et to ride,  
She's got a tick-et to ride,  
She's got a tick-et to ri -  
She's got a tick-et to ri -

F Em D7

- hi - hide, - hi - hide,  
She's got a tick-et to ride, but she don't care!  
She's got a tick-et to ride, but she don't care!

G

1. 2.  
2. She I

C7

don't know why she's rid-ing so high, She ought-ta think twice; she ought-ta do right by

D C7

me. Be fore she gets to say-in' good-bye She ought-ta

D

think twice; she ought - ta do right by me. 3. I

G

think I'm gon - na be sad, I think it's to - day Yeah!

The girl that's driv - ing me mad is go - ing a - way.

Am

D7

Em

Yeah! Oh, She's got a tick - et to ride,

C7

Em

F

She's got a tick - et to ri - hi - hide,

Em D G

She's got a tick - et to ride, but she don't care.

C7

I don't know why she's rid - ing so high. She ought - ta

D C7

think twice; she ought - ta do right by me. Be - fore she gets to say - in' good - bye,

D

She ought - ta think twice; she ought - ta do right by me.

G

4. She said that living with me is bring - ing her down.

Yeah! For she would nev - er be free.

when I was a - round. Yeah! Oh,

Am D7

She's got a tick - et to ride. She's got a tick - et to ri -

Em C7

- hi - hide, She's got a tick - et to ride but she don't care!

F Em D7

My ba - by don't care!

G

*Repeat and Fade*



# When I'm Sixty Four

Words & Music by John Lennon & Paul McCartney

Moderately

C

F

G7



C



§

C

1.	When I get old - cr.	los - ing my hair	ma - ny years from now.
2.	I could be hand - y.	mend - ing a fuse.	when your lights have gone.
3.	Send me a post - card,	drop me a line.	stat - ing point of view.

The third system contains the first verse of the song. It includes three vocal parts (1, 2, and 3) and a piano accompaniment. The melody is in C major, 4/4 time, and features a simple, conversational style.

G7

—	Will you still be send - ing me a	val - en - tine.
—	You can knit a sweat - er by the	fire side.
—	In - di - cate pre - cise - ly what you	mean to say.

The fourth system contains the second verse of the song. It includes three vocal parts (1, 2, and 3) and a piano accompaniment. The melody is in G7, 4/4 time, and continues the conversational style.

No Chord

C

birth - day greet - ings,  
Sun - day morn - ing  
Yours sin - cere - ly

bot - tle of wine? —  
go for a ride. —  
wast - ing a - way. —

If I'd been out — till  
Do - ing the gar - den,  
Give me an an - swer,

C7

F

quar - ter to three.  
dig - ging the weeds,  
fill in a form,

would you lock the door?  
Who could ask for more?  
mine for ev - er more.

C/G

A7

D7

G7

3rd time  
To Coda

Will you still need me,  
Will you still need me,  
Will you still need me,

will you still feed me,  
will you still feed me,  
will you still feed me,

when I'm six - ty  
when I'm six - ty  
when I'm six - ty

C

Am

four?  
four?

(2.) Ev - 'ry sum - mer we could rent a

(1.) Oo  
cot - tage in the Isle of Wight.

G

Am

if it's not too dear.

You'll be  
We shall

E

Am

old - er, and  
scrimp and  
too. save  
Ah, Ah,

Dm

F

and if you say the word, I Ve could  
grand - child - ren on your knee, ra,

G

C

G

stay Chuck with and you. Dave,

1.

2.

*D.S. al Coda**Coda*

C

four?

F

G7

C

four?

# Yellow Submarine

Words & Music by John Lennon & Paul McCartney

March Tempo

G D C G Em Am C

In the town where I was born lived a man who sailed to

D G D C G Em Am C

sea. And he told us of his life in the land of sub-mar

D G D C G Em Am C

-ines. So we sailed up to the sun 'till we found the sea of

D G D C G Em Am C

green. And we lived be-neath the waves in our yel-low sub-mar

D G D

- ine. We all live in a yel - low sub - mar - ine,

G

yel - low sub - mar - ine, yel - low sub - mar - ine. We all live in a

D G

yel - low sub - mar - ine, yel - low sub - mar - ine, yel - low sub - mar - ine. And our

D C G Em Am C

friends\_\_\_\_\_ are all on board, man - y more of them live next

D G D C G

door. And the band\_\_\_\_\_ be - gins to play:

G D

We all live in a yel - low sub - mar - ine,

G

yel - low sub - mar - ine, yel - low sub - mar - ine. We all live in a

D G

yel - low sub - mar - ine, yel - low sub - mar - ine, yel - low sub - mar - ine. As we

D C G Em Am C D G

live a life of ease, ev' - ry one of us has all we need. Sky of

D C G Em Am C D *D. and Fade*

blue and sea of green, in our yel - low sub - mar ine.